

# Thursday 29th November 2018



**School is closed to all pupils tomorrow for staff training**



## Christmas Home Learning Project

Children and their families have been asked to create a decoration for our Christmas tree as a Home Learning activity.

Please send your decoration in by Monday 3<sup>rd</sup> December 2018.

## Falcons

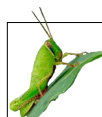


Pupils have been busy working on their tea towel project for Enterprise Week.

Please fill in the order form if you would like one.



Check out our Facebook page  
Tettenhall Wood School



## Grasshoppers

Pupils enjoyed their trip to see 'Early Man' at the cinema.

In class we have been learning about shape.

**Parent/Carer Coffee Morning**  
**Friday 14th December**  
**9:30am-11:30am**

## Dates for your Diary

Parents/carers are invited into school on the following dates:

DATE & TIME	EVENT	CLASSES
7th December, 1:30pm	Christmas Fayre	
12th December, 1:45pm	Performance	Bees, Grasshoppers, Butterflies
13th December, 1:45pm	Performance	Swallows, Falcons, Eagles
14th December, 10am	Sensory Experience	Kingfishers, Owls, Fusion
14th December, 1:15pm	Sensory Experience	Ladybirds, Caterpillars, Dragonflies

## Review of Short Breaks

The City of Wolverhampton Council is carrying out a review of the services it commissions to support Short Breaks for children and young people with a disabilities aged 0-25 years.

They would like to hear from people who have experience of these services, either themselves or through a friend or loved ones.

To take part in the consultation, please complete a short survey available at:

[https://www.surveymonkey.co.uk/r/cwc\\_short\\_breaks\\_cyp](https://www.surveymonkey.co.uk/r/cwc_short_breaks_cyp)

Below is a link to the video by Voice4Parents endorsing the survey:

<https://youtu.be/PpFt5-mvPXc>

*Closing date for your say is 21<sup>st</sup> December 2018*

<https://tettenhallwoodschoo.org.uk/outreach-and-training/parents-workshops>

## Autism Friendly Cinema

### Cineworld

Sunday 2nd 11:00am The Grinch

### Showcase

Sunday 9th 10:00am The Nutcracker and the Four Realms (PG)

### Odeon

Sunday 9th 10:15am Wreck It Ralph 2

Monday 10th 6:00pm Fantastic Beasts 2: The Crimes of Grindelwald (12A)

Sunday 16th 10:15am The Grinch

Sunday 30th 10:15am Mary Poppins Returns

## Finances and Benefits

**Thursday 13th December, 9:30am-11:30am**

A representative from Welfare Rights will be coming in to talk to parents/carers about their entitlements and answer any questions you may have.

Please contact school to confirm your attendance.